

MAKING ROUNDED CORNERS IN PHOTOSHOP

One of the questions that we get all of the time is – How do you get those nice rounded corners on your pictures?

This process can be one that is difficult to achieve for many beginners.

Rounded corners can actually be implemented rather easily. The trick is to use pre-defined shapes, and simply *contain* your artwork within those shapes.

Photoshop comes with some basic pre-defined shapes that will help create smooth, rounded corners. Note that we use Photoshop CS3, but this desired effect can be implemented in other versions of Photoshop.

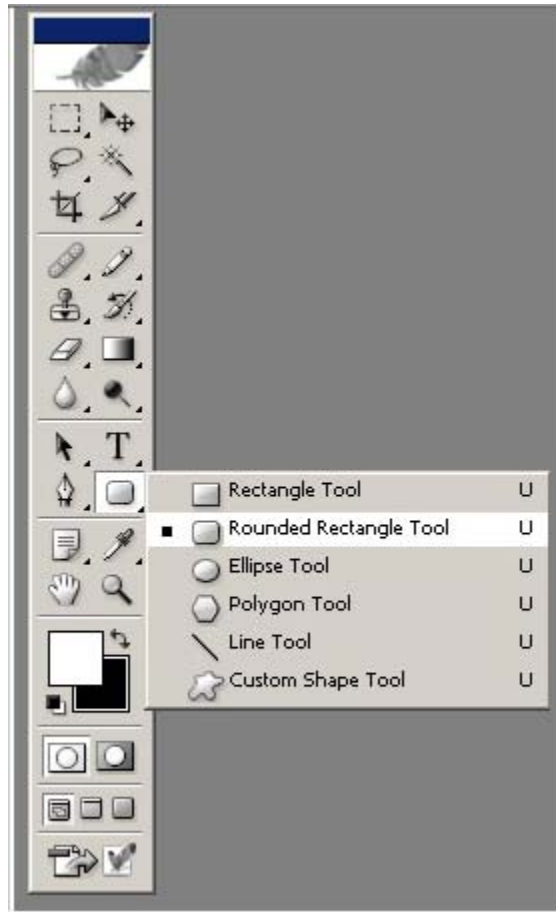
First, we start off with our image:



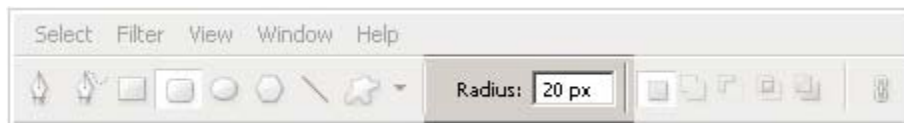
To create rounded corners, we will use the Rounded Rectangle Tool. This will allow us to specify the **radius** of each corner - in a consistent fashion.

Select the Rounded Rectangle Tool from the Tools:

With the Rounded Rectangle Tool selected, use the Options menu to change the radius of the corners. You can specify any number - the smaller you go, the less noticeable your rounded corners will be.



Once the Radius is set, keep your eye on the Options menu. To the far left, you'll see three small options that affect how your Rectangle will be drawn.



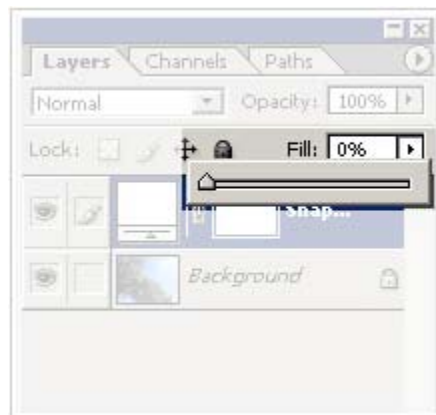
The one we want is the **first** one. This one is called “Shape layers,” and it allows us to *select our rectangle*, later on, and include whatever is inside of it. (This should automatically be selected, by default.)



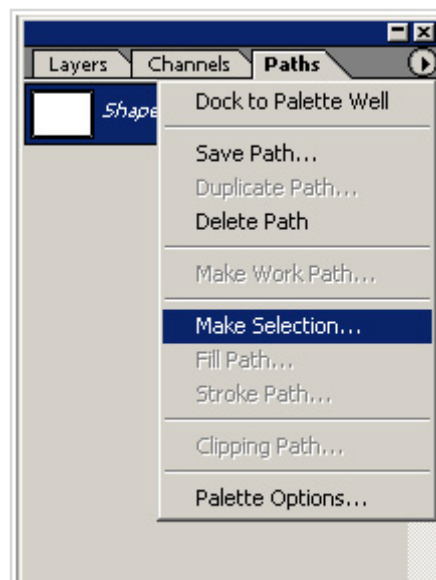
With our Options set, draw the Rounded Rectangle on top of the artwork. Remember, everything **inside** the rectangle will be included.



To get rid of the fill color, go to the **Layers** palette, and drag the **Fill** slider down to **0%**



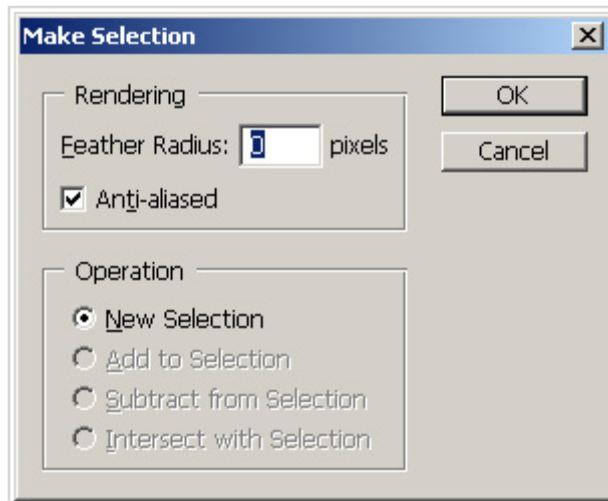
Now, go to the **Paths** palette, use the arrow in the upper right corner, and select **Make Selection**.



In the Make Selection dialog box, leave the settings *as is*: Feather Radius at 0 pixels, Anti-aliased checked, and New Selection highlighted.

You should notice your rounded rectangle turn into a selection.

Now, go to “Edit” > “Copy Merged,” create a New Document, and Paste what you just copied.



Make sure your New Document is the same size as your Document you “Copy Merged” from. Also make sure and pick what color background you want.



And there you have it!

[Return to How To Page](#)